



Lake Simcoe Region
conservation authority

Durham Regional Forest

- Main Tract -

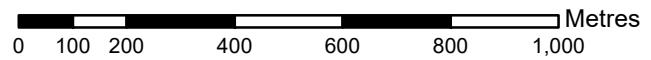
Temporary Trail Closures - October 23rd to November 30th, 2024

Recreational Trails

- Maple Loop
- Red Oak Loop
- Spruce Loop
- White Pine Loop
- Bowes
- Wall of Pain
- Burnt Toast
- Knotty But Nice
- Lickety Split
- Logs Over Easy
- Lunatic Way
- Maple Gravy
- Baby Butter
- Missing Link
- The Pines
- Ogre and Out
- Big Butter
- Slider
- Bowes Too
- Stone Soup
- Superfly Alley
- The Maze
- Home Run
- Swoop-D-Doo
- Scratchy - Closed
- Itchy - Closed
- Oakie Dokie
- Return to Sender

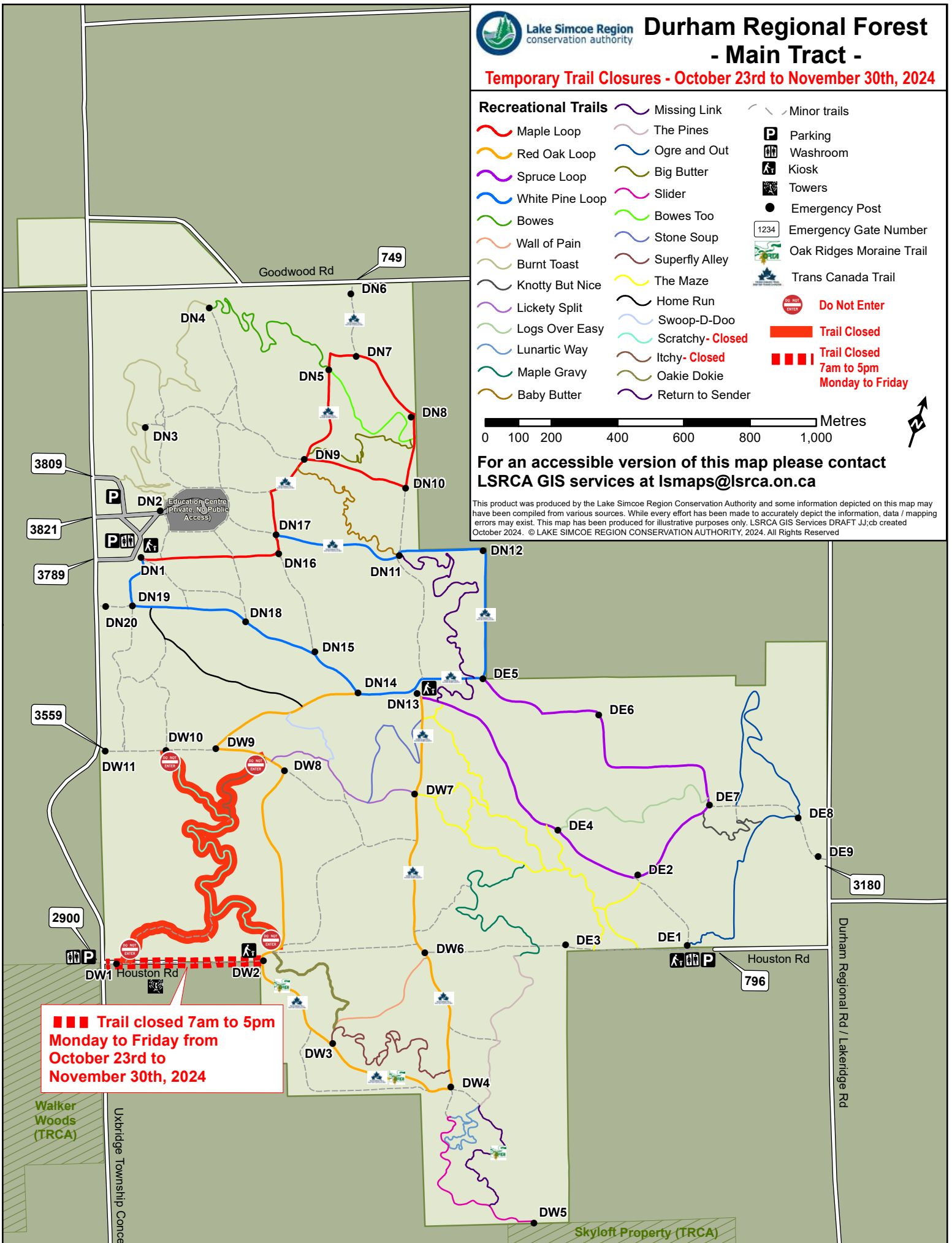
- Minor trails
- Parking
- Washroom
- Kiosk
- Towers
- Emergency Post
- Emergency Gate Number
- Oak Ridges Moraine Trail
- Trans Canada Trail

- Do Not Enter
- Trail Closed
- Trail Closed 7am to 5pm Monday to Friday



For an accessible version of this map please contact
LSRCA GIS services at lsmaps@lsrca.on.ca

This product was produced by the Lake Simcoe Region Conservation Authority and some information depicted on this map may have been compiled from various sources. While every effort has been made to accurately depict the information, data / mapping errors may exist. This map has been produced for illustrative purposes only. LSRCA GIS Services DRAFT JJ;cb created October 2024. © LAKE SIMCOE REGION CONSERVATION AUTHORITY, 2024. All Rights Reserved



**Trail closed 7am to 5pm
Monday to Friday from
October 23rd to
November 30th, 2024**